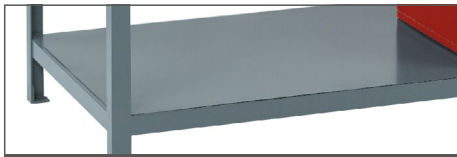


## Workbench Accessories

A comprehensive range of accessories for storage above and below the work surface. Workbench accessories are factory fitted and not for retro-fit. Above worksurface accessories are supplied detached for transportation purposes.



### Base Shelves

| Code | Length (mm) | £     |
|------|-------------|-------|
| BS12 | 1200        | 80.80 |
| BS15 | 1500        | 88.84 |
| BS18 | 1800        | 96.90 |

Base shelves are 1.2mm thick steel sheet.



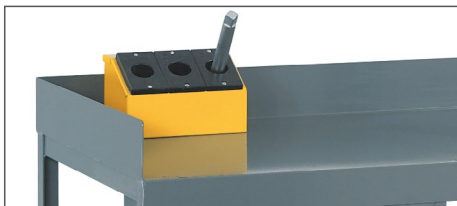
### Drawers - 25kg UDL

| Code | Description  | £      |
|------|--|--------|
| D1   | Single drawer  | 117.52 |
| D2   | Double drawer  | 162.08 |
| D3   | Triple drawer  | 206.30 |
| D4   | Quad drawer  | 252.36 |
| C1   | Cabinet:<br>Cabinet Size - External<br>D450 x W450 x H600mm  | 143.72 |
| CD1  | Cabinet drawer:<br>Cabinet Size - External<br>D450 x W450 x H600mm<br>Drawer Size - Internal<br>D420 x W355 x H100mm | 185.45 |

Includes shelf

### Castors

| Code | Description | £     |
|------|-------------|-------|
| C100 | x 4 100mm   | 75.57 |



### 100mm Retaining Lip Three Sides

| Code | Description                                     | £     |
|------|---|-------|
| SL12 | Retaining lip for 3 sides for 1200mm long bench | 56.19 |
| SL15 | Retaining lip for 3 sides for 1500mm long bench | 57.24 |
| SL18 | Retaining lip for 3 sides for 1800mm long bench | 58.30 |



### Monitor Arm

| Code  | Description          | £      |
|-------|----------------------|--------|
| KBMA1 | Keyboard monitor arm | 163.62 |



### Electrics

| Sloping fronted rear service duct unwired |             |       |
|---|-------------|-------|
| Code                                      | Length (mm) | £     |
| SD12                                      | 1200        | 81.46 |
| SD15                                      | 1500        | 86.34 |
| SD18                                      | 1800        | 90.75 |

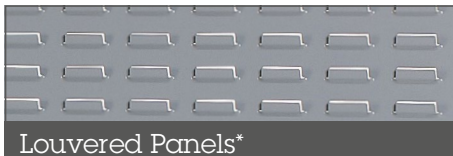
Supplied unwired, for fitting by a suitably qualified electrician.



### Accessory Posts (for back panel)

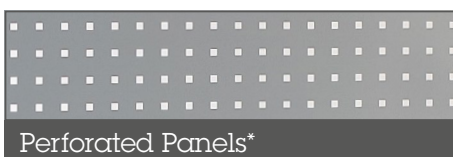
| Code | Length (mm) | £     |
|------|-------------|-------|
| AP1  | 1000        | 60.20 |
| AP2  | 1500        | 65.16 |
| AP3  | 2000        | 71.97 |

Adjustable and supplied in pairs.



### Louvered Panels\*

| Code | Length (mm) | £     |
|------|-------------|-------|
| LP12 | 1200        | 76.95 |
| LP15 | 1500        | 84.16 |
| LP18 | 1800        | 95.06 |



### Perforated Panels\*

| Code | Length (mm) | £     |
|------|-------------|-------|
| TP12 | 1200        | 76.95 |
| TP15 | 1500        | 84.16 |
| TP18 | 1800        | 95.06 |

### Combi-Panels\*

| Code | Length (mm) | £     |
|------|-------------|-------|
| CP12 | 1200        | 76.95 |
| CP15 | 1500        | 84.16 |
| CP18 | 1800        | 95.06 |

### Vices

| Code   | Description     | £      |
|--------|-----------------|--------|
| BV15VP | 150mm Engineers | 154.99 |

### Vice Plate

| Code | Description | £     |
|------|-------------|-------|
| VP   | Vice plate  | 30.21 |



### Upper Shelves\*\*

| Code   | Length (mm) | £     |
|--------|-------------|-------|
| USS12* | 1200        | 71.56 |
| USS15* | 1500        | 81.59 |
| USS18* | 1800        | 95.13 |

\*Upper shelves are 2mm thick steel. Laminate & MDF also available.



### Light Bars\*\*\*

| Code | Length (mm) | £      |
|------|-------------|--------|
| LU12 | 1200        | 166.01 |
| LU15 | 1500        | 166.38 |
| LU18 | 1800        | 169.90 |

Supplied unwired, for fitting by electrician.

### Louvered Category 2 Light Unit\*\*\*

| Code | Length (mm) | £      |
|------|-------------|--------|
| CU12 | 1200        | 255.91 |
| CU15 | 1500        | 256.97 |
| CU18 | 1800        | 258.38 |

Supplied unwired, for fitting by electrician.



### Plastic Bins (Per Pack)

| Code | L (mm) | W (mm) | D (mm) | £     | QTY |
|------|--------|--------|--------|-------|-----|
| BB2  | 165    | 100    | 75     | 58.12 | 20  |
| BB3  | 240    | 150    | 125    | 62.83 | 10  |
| BB4  | 355    | 200    | 125    | 74.73 | 10  |
| BB5  | 355    | 200    | 175    | 98.96 | 10  |

Minimum order value £50 net. If ordered separately from a workbench please add £15 carriage.

### Workbench Options

Medium & heavy duty workbenches are available in the following options, please add:

| Code | Description  | £      |
|------|--------------|--------|
| SDC  | Sliding Door | 463.03 |
| FP   | Flat Pack    | 39.57  |

### \*ACCESSORY POSTS REQUIRED

\* AP1 Required

\*\* AP2 Required

\*\*\* AP3 Required